



VENTE NEUF

*kawasaki Stx 160x*

13 995 £ TTC

## SPÉCIFICATIONS

---

ANNÉE	LONGUEUR	LARGEUR	MARQUE MOTEUR
<b>2021</b>	<b>3.14</b>	<b>1.16</b>	<b>Kawasaki</b>

---

PUISSANCE
<b>1 X 160.0 CV</b>

Type power	Constructeur kawasaki	Modèle Stx 160x	Lieu / Visible À Chertsey
---------------	--------------------------	--------------------	------------------------------

Vitesse De Croisière (Nd) 25.00	Vitesse Max (Nd) 50.00
------------------------------------	---------------------------

Matériau Coque  
fiberglass

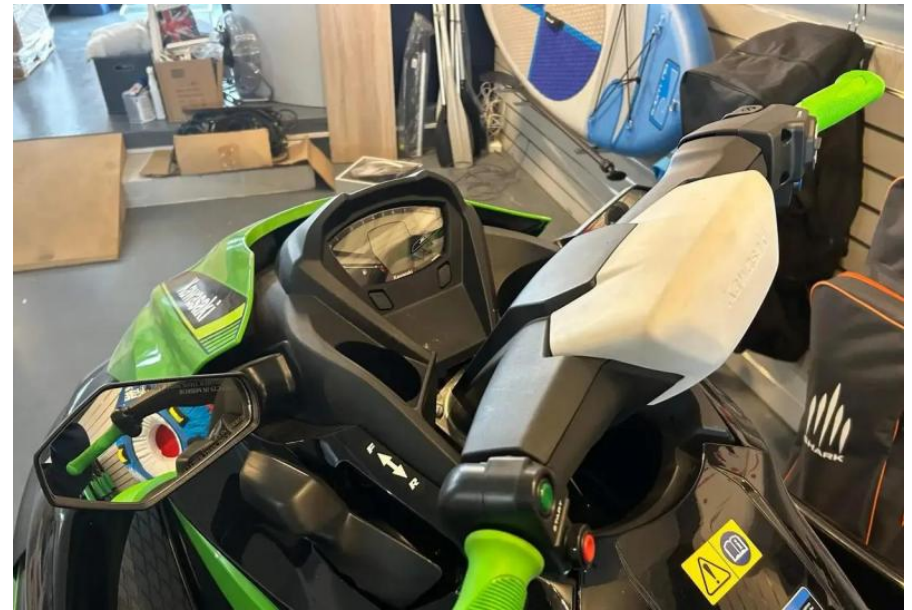
Moteur Kawasaki	Puissance 1x160.0CV	Hélices Jet Drive
--------------------	------------------------	----------------------















<b>MODEL</b>	<b>Jet Ski STX 160 Series</b>
<b>Engine Type</b>	1,498 cm <sup>3</sup> Water-cooled, 4-stroke In-Line Four DOHC, 16 valves
<b>Bore x Stroke</b>	83 x 69.2 mm
<b>Compression Ratio</b>	10.6:1
<b>Maximum Power</b>	112 kW {152 PS} / 7,500 rpm
<b>Maximum Torque</b>	144 N·m {14.7 kgf·m} / 6,000 rpm
<b>Fuel System</b>	Fuel Injection: Ø 60 mm x 1
<b>Starting System</b>	Electric
<b>Jet Pump</b>	Axial flow single stage
<b>Jet Pump Thrust</b>	4,130 N {421 kgf}
<b>Capacity</b>	3 persons
<b>Fuel Capacity</b>	78 litres
<b>L x W x H</b>	3,152 x 1,181 x 1,153 mm
<b>Curb Mass</b>	392 kg (STX 160) 392 kg (STX 160X) 398 kg (STX 160LX)
<b>Colour(s)</b>	New Gelcoat White / Sunbeam Red (STX 160) Ebony / Lime Green (STX 160X) Ebony / Candy Lime Green (STX 160LX)





